



Where Life finds Its Balance



Hattersley Park

CHURCHTOWN,
CARNDONAGH

**Energy Efficient
A Rated
New Homes**



GDC
Property Developers

Another exceptional development
from GDC (IRL) Ltd.



Carndonagh (Carn Domhnach in the Irish language) meaning “cairn or mound of the church” is a historic market town in the centre of the beautiful Inishowen Peninsula in County Donegal, known for its central “Diamond”, impressive Sacred Heart Church, St Parick’s High Cross with carvings which some historians say dates to the 7th Century. With its central location Carndonagh is the perfect base to explore all that Inishowen has to offer such as its many Beaches, Championship Golf Courses, Trawbreaga Bay, not to mention Ireland’s most northerly point Malin Head which was the location for the Star Wars movie- “The last Jedi” and it is also an important fishing port. The town itself has everything to support the needs of every day family life, from the Local Authority Civic Offices, Hospital, Doctor Surgeries, Dental Practice, Pre-Schools, National Schools, Secondary School, Shopping Centres, Banks, Post Office, Churches, Park, Sporting Clubs, Pubs, Restaurants and much much more. With a strong sense of community and lasting quality in every detail, this is more than a place to live, it’s a place to grow, belong and build your future.

Only a short walk from all that Carndonagh has to offer, nestled in the prestigious townland of Churchtown, Hattersley Park is set to become a small tasteful New Development of 3 & 4 Bedroom Energy Efficient A-Rated Homes. With thoughtfully designed and landscaped Open

spaces, a high specification and superb standard features throughout, together with an unrivalled attention to detail and beautiful finishing materials, GDC(IRE) Ltd are about to create a most pleasant and comfortable environment for modern family living. Ideal for growing families, downsizers, or those looking to trade up, each home will feature premium finishes and modern energy-efficient technology including Air to Water Heating, Triple Glazing, Electric Vehicle Chargers, LED lighting, Highly Insulated and Air Tightness tested all combined to deliver year-round comfort while reducing energy costs to a minimum.

Behind this New development are long established local developers GDC(IRE) Ltd, with over 25 years’ experience delivering high quality developments throughout Co. Donegal and Northern Ireland. Striving to ensure every customer enjoys their New-Home buying experience from start to finish is matched with an unrivalled after sales service and attention to detail. With some of the county’s most highly regarded housing developments to its credit, GDC(IRE) Ltd have become synonymous with pioneering the delivery of high quality Energy Efficient A-Rated Homes and creating some of the most beautiful, pleasant and comfortable settings for family living. Hattersley Park is sure not to disappoint!

Specifications



- A Energy Rating
- Triple Glazed Windows
- 100% Energy Efficient Lighting
- Quality Fitted Kitchens
- Floor Coverings Throughout
- Quality Internal Doors
- Kitchen Appliances
- Burglar Alarm
- Extensive Electrical Specification
- Quality Sanitaryware
- Tiling to WHB, Baths and Showers, Floors tiled in Bathroom, Ensuite & WC
- Walls and ceilings fully painted throughout to developers specification
- Highly Insulated
- Renewable Air to Water Heating System
- Air Tightness Tested
- Fibre Broadband available
- Electric Vehicle Charging Point as standard on every house
- Homebond 10 Year Structural Guarantee
- Finished Lawns
- Quality Build
- Finished Driveways
- Landscaped Pleasant Open spaces

House Type A

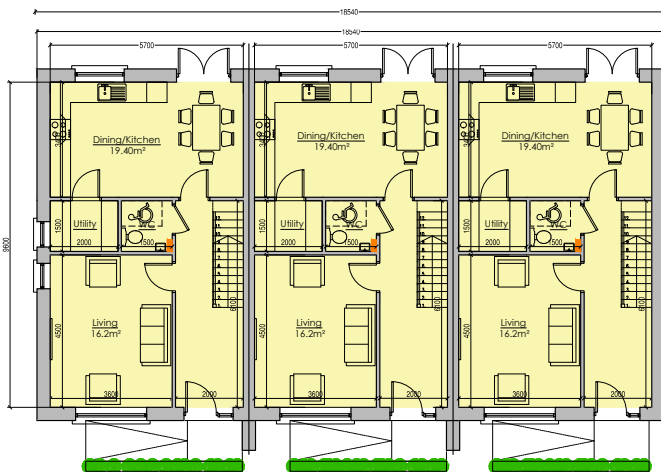
3 Bedroom



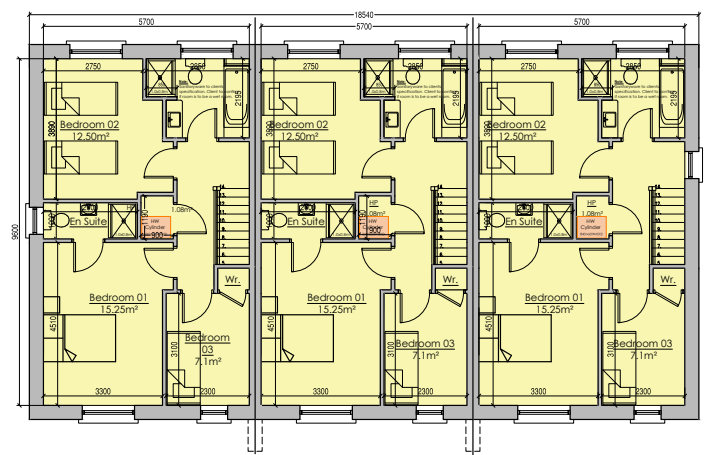
similar development
by GDC



Front Elevation



Ground Floor Plan



First Floor Plan

Floor Area = 109.44m² (c. 1,178.0sq ft)

House Type B

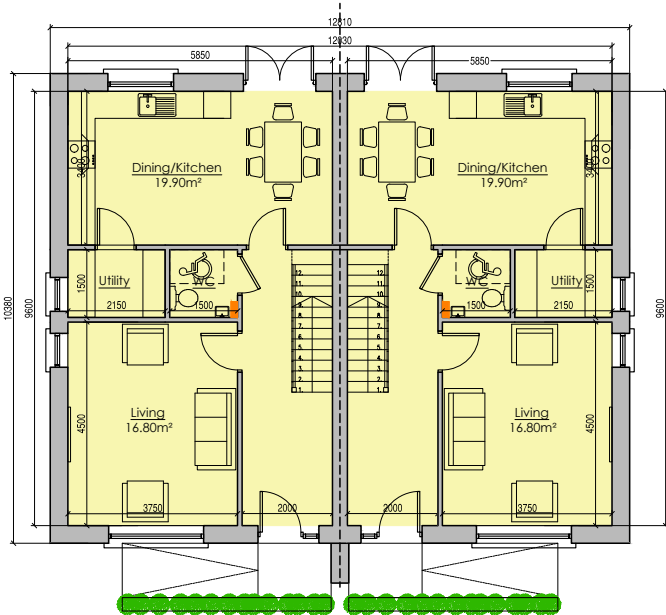
3 Bedroom | Semi-Detached



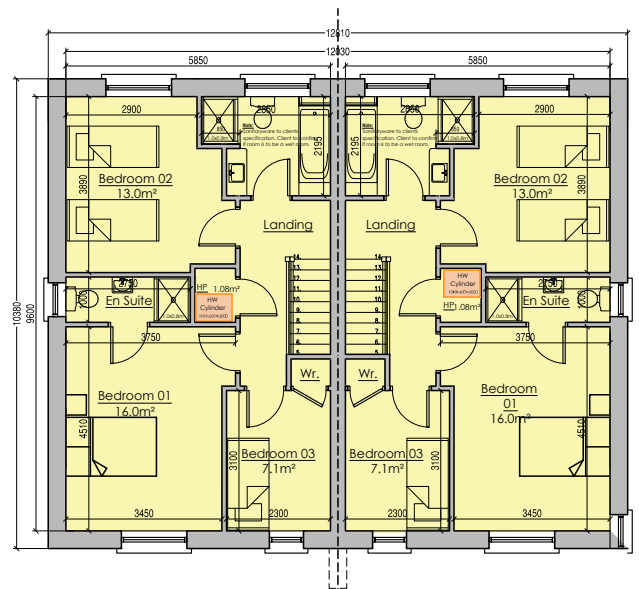
similar development
by GDC



Front Elevation



Ground Floor Plan



First Floor Plan

Floor Area = 112.4m² (c. 1,209.85 sq ft)

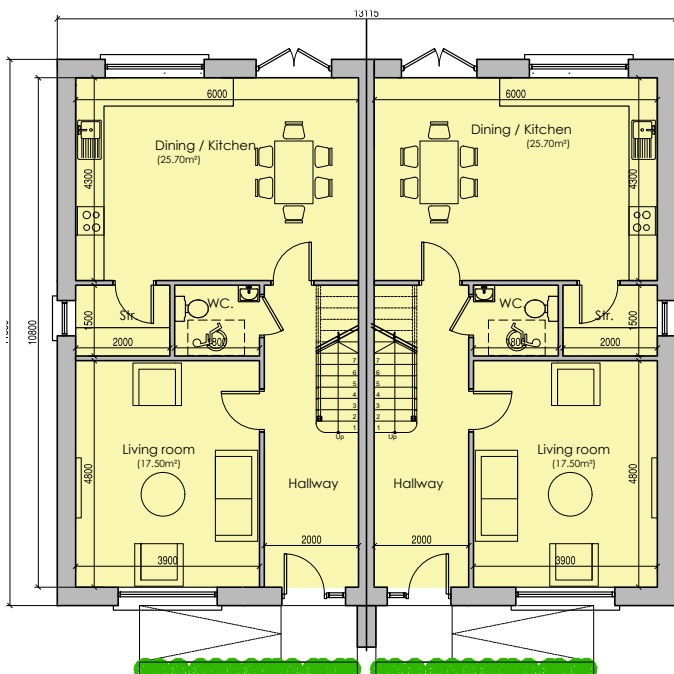
House Type C

4 Bedroom | Semi-Detached

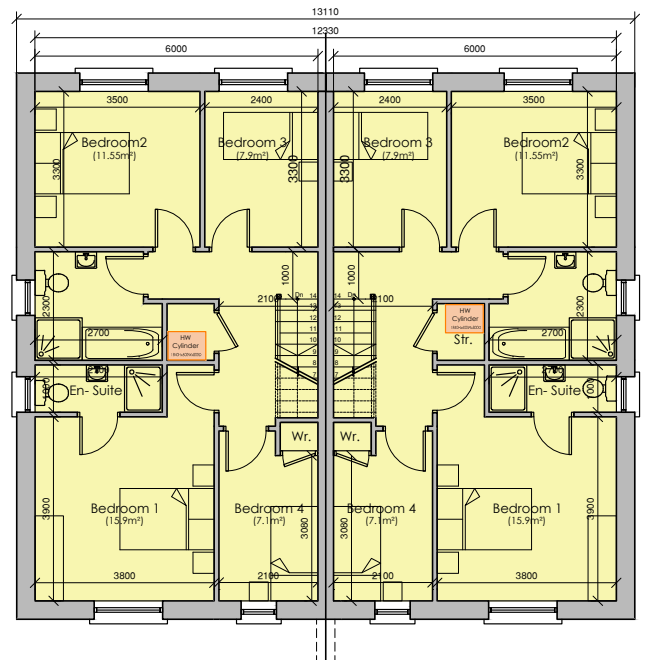


similar development
by GDC

Front Elevation



Ground Floor Plan



First Floor Plan

Floor Area = 130.0m² (c. 1,399.30sq ft)

House Type D

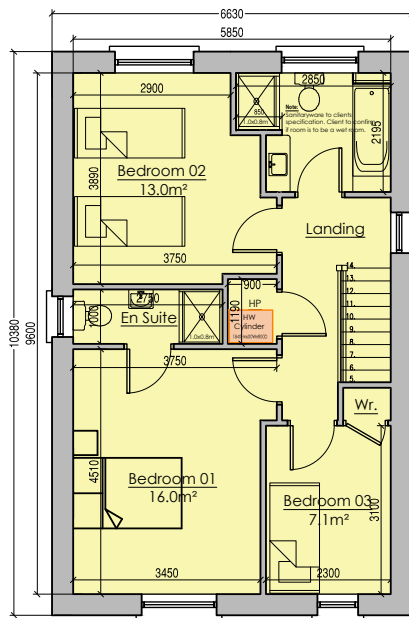
3 Bedroom | Detached



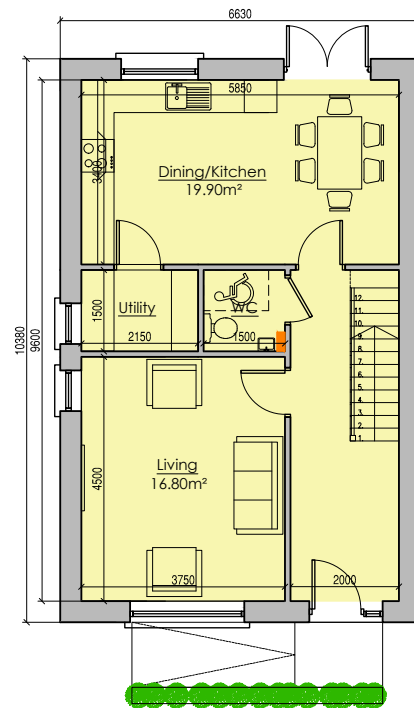
similar development
by GDC



Front Elevation



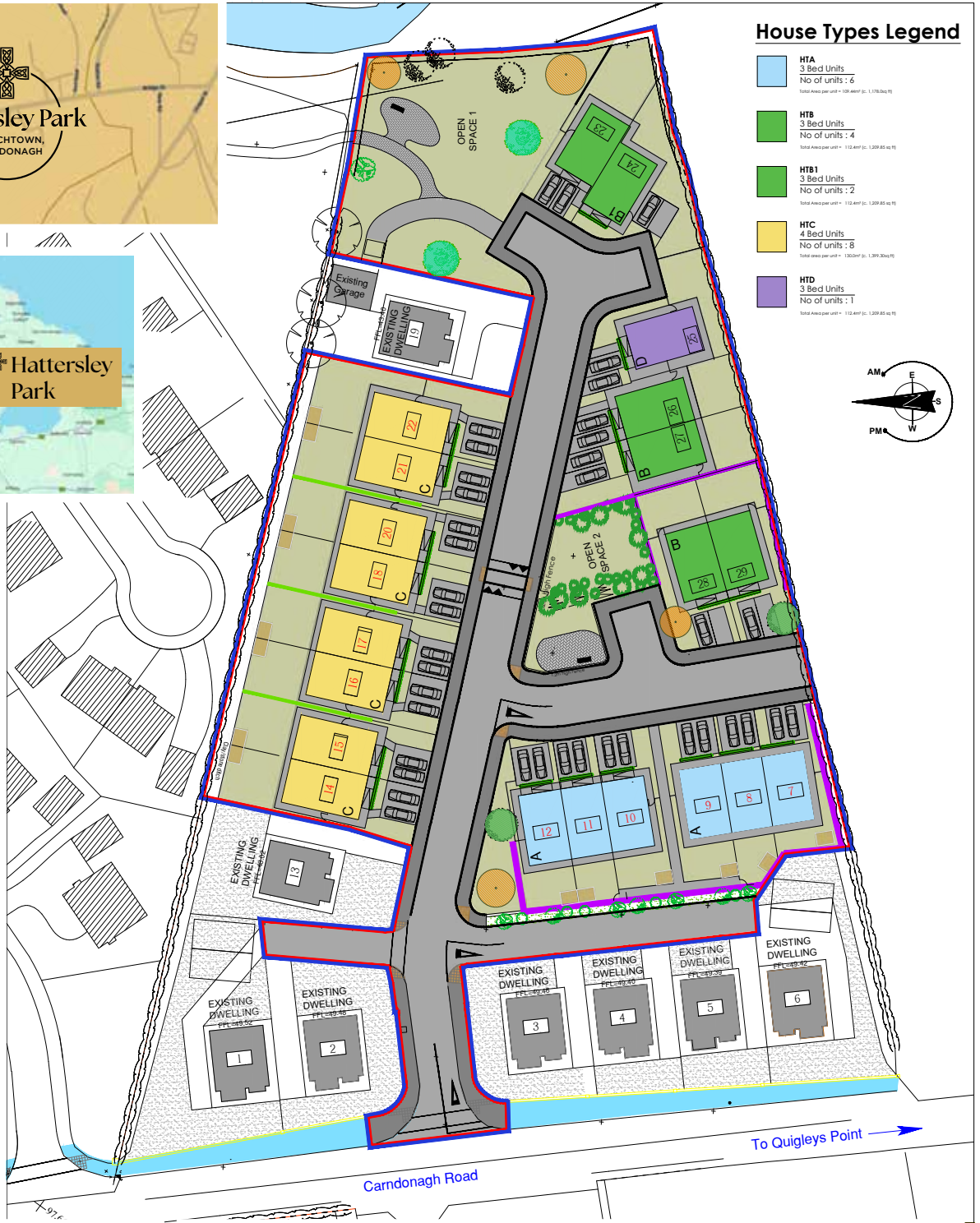
Ground Floor Plan



First Floor Plan

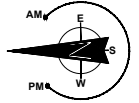
Floor Area = 112.4m² (c. 1,209.85 sq ft)

Site Layout



House Types Legend

- HTA
3 Bed Units
No of units : 6
Total Area per unit = 126.44m² (G: 1,178.24m²)
- HTB
3 Bed Units
No of units : 4
Total Area per unit = 112.44m² (G: 1,209.85 m²)
- HTB1
3 Bed Units
No of units : 2
Total Area per unit = 112.44m² (G: 1,209.85 m²)
- HTC
4 Bed Units
No of units : 8
Total Area per unit = 130.07m² (G: 1,391.26m²)
- HTD
3 Bed Units
No of units : 1
Total Area per unit = 112.44m² (G: 1,209.85 m²)



similar developments by GDC



Email: info@gdcirl.com
Tel: 074 93 84700

Register your interest in this development at
gdcirl.com/developments/hattersley-park/



Qualified for

